

GENERAL SPECIFICATION:

- POWER REQUIREMENT
 - 3Ø, 4-WIRE 480Y/277V INPUT (3Y-480)
 - 50A
- AIR REQUIREMENT
 - 90 PSI MAX
 - CLEAN, DRY AIR
- MAWP: 150PSI
- MAWT: 120°F
- SYSTEM INFLUENT
 - 40-180 GPM
 - 43 - 8.6 PSI
- SYSTEM EFFLUENT
 - 35-160 GPM
 - 43-21.6 PSI
- CONTROLS
 - ALLEN BRADLEY PLC
 - 12" MAPLE SYSTEMS HMI
 - SCHNEIDER VFD'S
- SYSTEM EQUIPMENT
 - DRUM SCREEN : RSH-E 2425
 - COMPACTOR: SCD-200
 - AUTOMATIC FILTER: T1000-SIM
- APPROXIMATE DRY WEIGHT: 5500 LBS
- APPROXIMATE WET WEIGHT: 9500 LBS
- SUGGESTED COMPACTED SOLIDS COLLECTION
 - LOW PROFILE PARTS HOPPER OR TILT CART
 - HOP-LP-N

MATERIALS:

- FILTER EQUIPEMENT
 - AUTOMATIC FILTER
 - 304SS HOUSING
 - 304SS & 17-4PH DRIVE TRAIN
 - POWDER COATED STAND
 - 316SS FILTER ELEMENT
 - DRUM SCREEN
 - 304SS BODY
 - 316SS FILTER SCREEN
 - SCREW PRESS
 - 304SS BODY
 - UHMW-PE SCREW
- PIPING & VALVES
 - SCH80 PVC, TYPE I
- PUMPS
 - CAST IRON HOUSINGS
- SKID
 - EPOXY COATED CARBON STEEL
- CONTROL PANEL
 - POWDER COATED CARBON STEEL

NEMA-3R BLADE STYLE DISCONNECT SWITCH (1" KNOCKOUT ON BOTTOM)

SYSTEM CONTROL PANEL

DRUM SCREEN
SPIRAL COMPACTOR

EQ. TANK MIXER

200 GAL. EQ. TANK

AUTOMATIC FILTER
3A 115V DUPLEX GFCI OUTLET & RJ 45 ETHERNET PORT

COMPACTED SOLIDS EXIT

INFLUENT PUMP

[2214]
7'-3.2"

[617]
24.3
SOLIDS EXIT HEIGHT

[1067]
42.0 TYP.
O.C. FORKLIFT POCKETS FOR 6" WIDE FORKS

LEVELING FEET (0.8" THRU HOLE FOR 3/4" FOUNDATION BOLTS)

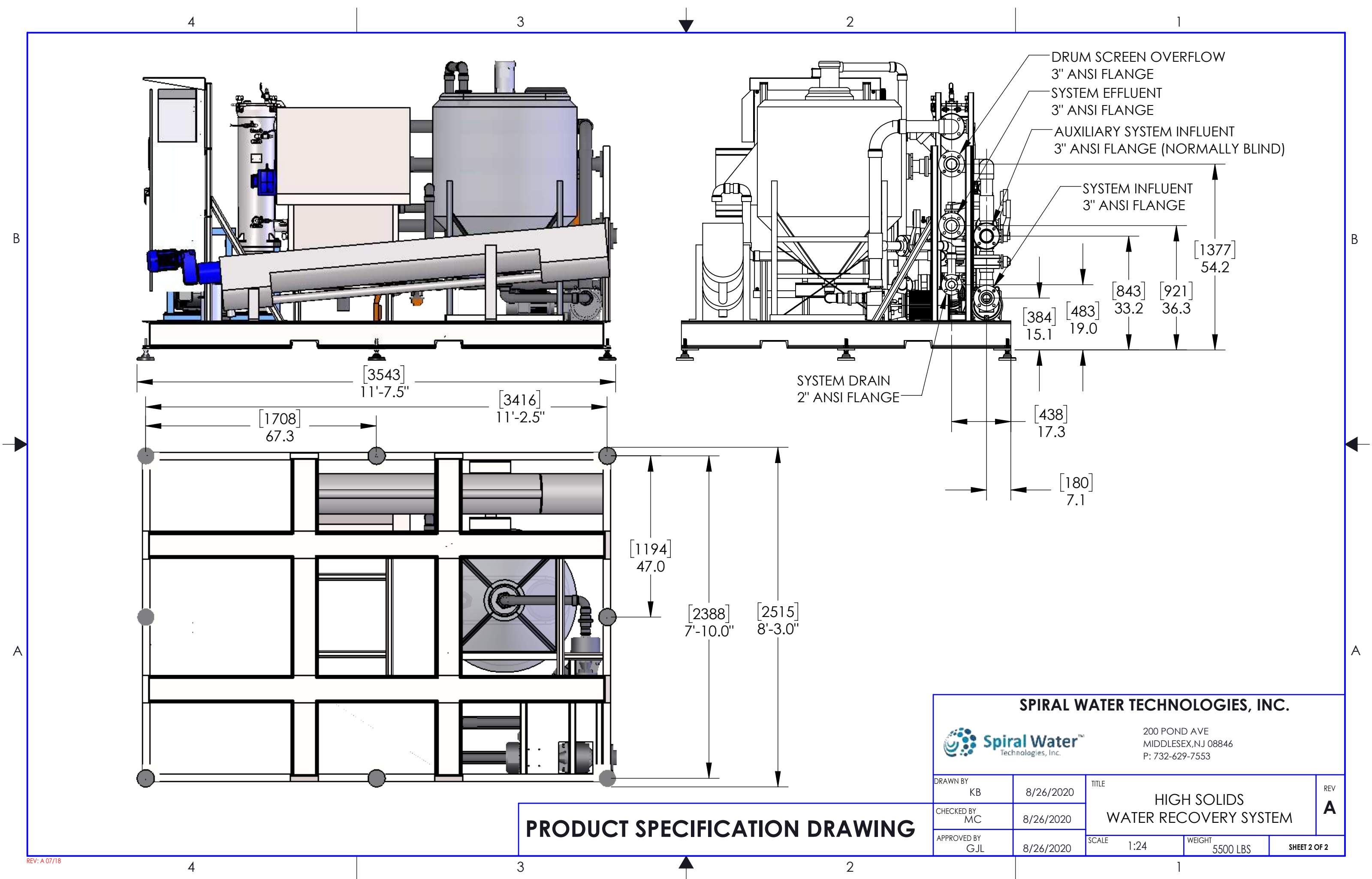
SPIRAL WATER TECHNOLOGIES, INC.



200 POND AVE
MIDDLESEX, NJ 08846
P: 732-629-7553


DRAWN BY KB	8/26/2020	TITLE HIGH SOLIDS WATER RECOVERY SYSTEM	REV A
CHECKED BY MC	8/26/2020	SCALE 1:40	WEIGHT 5500 LBS.
APPROVED BY GJL	8/26/2020	SHEET 1 OF 2	

PRODUCT SPECIFICATION DRAWING



PRODUCT SPECIFICATION DRAWING

SPIRAL WATER TECHNOLOGIES, INC.


 200 POND AVE
 MIDDLESEX, NJ 08846
 P: 732-629-7553

DRAWN BY	KB	8/26/2020	TITLE		REV
CHECKED BY	MC	8/26/2020	HIGH SOLIDS WATER RECOVERY SYSTEM		A
APPROVED BY	GJL	8/26/2020	SCALE	1:24	WEIGHT
			5500 LBS		SHEET 2 OF 2