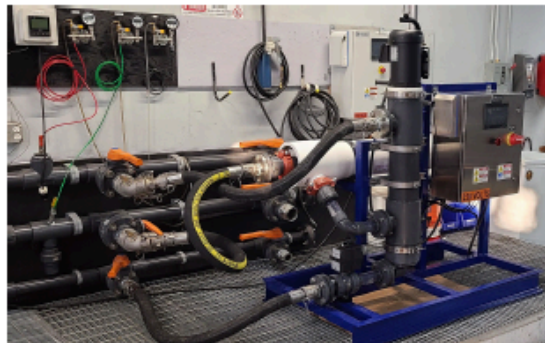




Spiral Water's Model 850 Filter – Superior Performance in a Compact Package

The latest evolution of our Series 800 filters, Spiral Water's **Model 850** advanced automatic self-cleaning filter is the most popular product in our 800 Series line.

The Model 850 is an ideal solution for use in specific industrial applications and for wastewater with a high or variable level of solids. Powerful yet compact in size, the Model 850 not only removes high total suspended solids (TSS) from high and variable total solids fluid streams.



Each filter unit contains a motor-driven, rotating spiral-shaped mechanical cleaning device that continuously cleans collected debris from inside the filter element. Solids are collected at the bottom of the filter housing to be expelled through an automatic purge valve or a continuous concentrate stream.

Unlike backwash filters, the SWT system does not require high pressure; it operates at system pressure of less than 20 psi and performs at very low differential pressure. No backwash, cross flow or booster pumps are required. The purge chamber concentrates and removes solids.

Standard materials of construction include PVC, CPVC, and Stainless Steel housings and internals.

Model 850 filters are available in single (SWT850-OEM) or multiple (SWT850-DPX) filter configurations to satisfy higher customer application flow rates. In addition to our standalone filters, we also provide integrated systems with multiple Model 850 filters for up to 1000 gpm.

Industrial applications for the Spiral Water Model 850 range from water filtration systems that extend the life of downstream equipment, to protecting process cooling systems; indoor ag and vertical farming; industrial water recovery and reuse; food processing and food processing wastewater; energy: power generation, hydropower and filtration for equipment protection in natural water sources; cooling water filtration; seawater filtration for protection of marine and shipboard desalination; breweries, wineries, industrial membrane (MBR) protection systems; irrigation systems that require ongoing fluid flow for nozzle protection; and industrial filters with membrane filtration components.

[LEARN MORE](#)

weftec
the water quality event™

Booth 4478

See Us at
[WEFTEC 2024!](#)

Spiral Water will showcase our advanced filtration solutions at WEFTEC 2024 and we invite you to visit our booth, #4478! The exhibition at WEFTEC takes place on October 7-9 at the Ernest N. Morial Convention Center in New Orleans. We look forward to seeing you there!

Spiral Water Technologies | [732-629-7553](tel:732-629-7553) | info@spiralwater.com | spiralwater.com

